



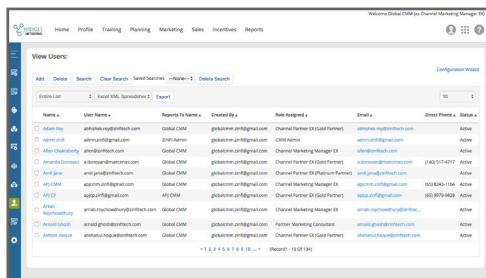
# Portal Content Management

The Portal Content Management module of ZINFI’s partner relationship management (PRM) platform enables your organization to set up and manage partner portal content and “market to partner” campaign content. All content can be assigned to different partner groups based on various criteria—including device type, geographic location and partner tier—with granular access control.

## Portal User Management

The Portal Content Management module allows your organization to control access to specific content in the partner portal by individual user and by user group.

With the user management features of our Portal Content Management module, you can manage the access rights of users and groups, as well as the association of users with specific groups, to provide restricted access to various zones within the partner portal.



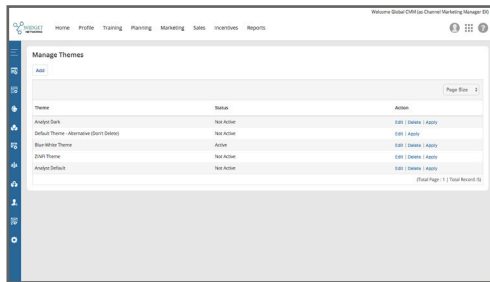
### Key Features

- ✓ User Setup & Management
- ✓ User Group Setup & Management
- ✓ User Group Association

## Portal Theme Management

The Portal Content Management module enables your organization to set up and manage partner portal themes (design and layout) in alignment with corporate branding guidelines and help establish uniformity across all partner-facing content.

With the theme management features of our Portal Content Management module, you can manage branding at the level of page content, headers and footers, and menus by specifying font style and color, border and background colors, and more. A partner portal with visually appealing vendor branding encourages channel partners to get engaged in the program.



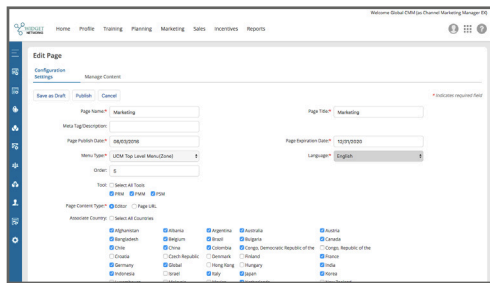
### Key Features

- ✓ Header Branding & Font Management
- ✓ Footer Branding & Font Management
- ✓ Menu Branding & Font Management
- ✓ Content Branding & Font Management

## Page Content Management

The Portal Content Management module enables your organization to set up portal pages using a site map structure and immediately begin adding pages and content. This module comes with a dynamic web page and content management capability.

With the content management features of our Portal Content Management module, your organization can create pages for access by channel partners across the globe or allow specific country teams to create and manage content locally, targeting non-English speaking audiences, for example.



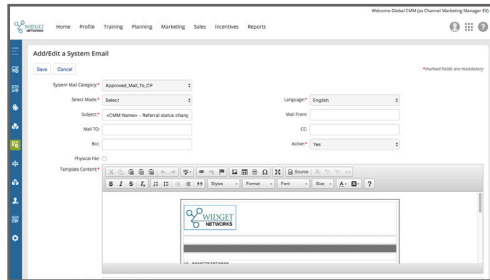
### Key Features

- ✓ Existing Portal Page Content Management
- ✓ New Portal Page Setup
- ✓ Page Publish & Expiration Date Management
- ✓ Page Order Management

## Portal Alerts Management

The Portal Content Management module allows your organization to set up dynamic system emails and alerts linked to relevant site activities. This capability allows your organization to configure system alerts and generate auto-notifications for a variety of partner activities.

With the alerts management features of our Portal Content Management module, you can configure alerts for partner activities like partner platform registration, contract sign-up, business plan submission and more. Channel sales teams can also be notified when new campaigns, assets, program launches, and other content becomes available.



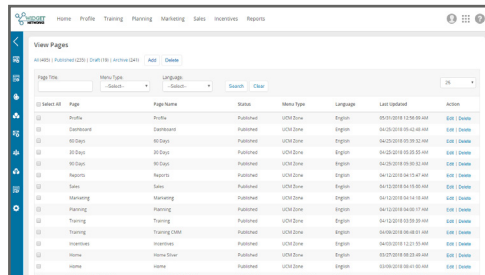
### Key Features

- ✓ System Email Setup
- ✓ System Email Management
- ✓ System Alert Setup
- ✓ System Alert Management

## Content Workflow Management

The Portal Content Management module enables your organization to dynamically manage and update portal content, once the partner portal has been set up with pages of content for different countries and languages.

With the content workflow features of our Portal Content Management module, your organization can easily develop a distributed workflow that enables virtual teams to collaborate from locations around the globe and collectively review, edit, modify and publish content.



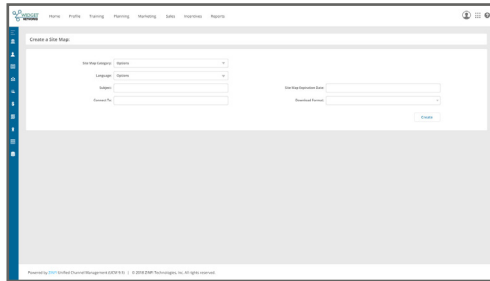
### Key Features

- ✓ Page Author Management
- ✓ Content Author Management
- ✓ Publishing Workflow Management
- ✓ Version Management

## Portal Site Map Management

The Portal Content Management module enables your organization to create a portal site map for faster and more efficient management of existing pages. The module allows your organization to keep track of all the data and content updated on the partner portal pages.

With the site map management features of our Portal Content Management module, your organization can manage overall site pages, create a dynamic site map and submit the map to external search engines for pages that are open to public.



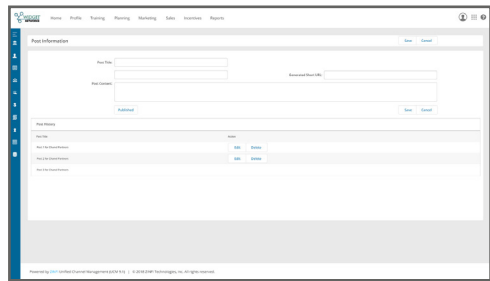
### Key Features

- ✓ Site Map Setup
- ✓ Site Map Management
- ✓ Site Map Submission

## Portal Connectors Management

The Portal Content Management module enables your organization to connect to other existing internal sub-systems, including learning management systems (LMSs), rewards and rebates, and your internal CRM infrastructure.

With the portal connectors management features of our Portal Content Management module, your organization can ensure seamless data flow between multiple applications, enabling you to dynamically manage the entire channel ecosystem effectively.



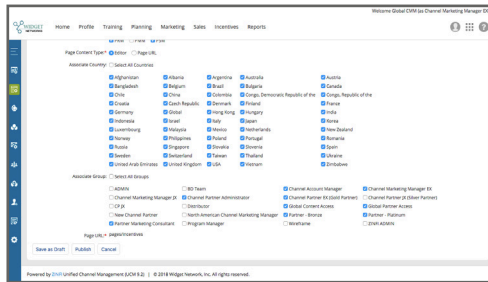
### Key Features

- ✓ Single-Sign-On (SSO) Management
- ✓ Social Connectors Management
- ✓ Access Reports & Tracking

# Portal Country Language Management

The Portal Content Management module enables your organization to set up the partner portal with content targeted to specific countries and languages, thus reducing the complexity of a global channel ecosystem.

With the portal country language management features of our Portal Content Management module, your organization can assign administrative managers and access rights to various internal members and agencies to manage portal content in a distributed way, with granular access control over the activities performed by each individual member.



## Key Features

- ✓ Country & Region Setup
- ✓ Country & Region Management
- ✓ Manage Languages by Country
- ✓ Assign Users for Content Management

**AMERICAS**  
[sales.noram@zinfitech.com](mailto:sales.noram@zinfitech.com)  
 6200 Stoneridge Mall Road, Suite 300  
 Pleasanton, CA 94588  
 United States of America

**EUROPE, MIDDLE EAST AND AFRICA**  
[sales.emea@zinfitech.com](mailto:sales.emea@zinfitech.com)  
 Davidson House  
 Forbury Square, Reading  
 RG1 3EU, United Kingdom

**ASIA PACIFIC**  
[sales.ap@zinfitech.com](mailto:sales.ap@zinfitech.com)  
 3 Temasek Avenue  
 #21-00 Centennial Tower  
 Singapore 039190

Please visit [www.zinfi.com/contact-us](http://www.zinfi.com/contact-us) to see the locations and contact information of our other global offices.

© 2018 ZINFI Technologies Inc. All Rights Reserved.

Australia • Brazil • China • France • Germany • Hong Kong • India • Indonesia • Italy • Japan • Korea • Romania • Singapore • Spain • UK • USA